



FABRICS & FINISHINGS
2021



FABRIC TYPE: BOND CHENILLE

The new fabrics

Munna's 2021 new fabrics not only meet the industry's highest standards, but also widen the range for interior designers and architects. The main types are two new Chenille fabrics, that not only come in a superb range of colours, but also meet the REACH and Oeko-Tex environmental standards, tested to ensure safe use for humans, animals and the environment. The 2021 fabrics includes new bouclé colours, new cotton velvets and more. While the brand also works with fabrics the clients provide, the wider portfolio of options represents a world of possibilities.

COTTON VELVET

MARTINDALE 40.000 | COMPOSITION 100% COTTON



PURE WHITE
CV01



PALE PINK
CV02



DESERT
CV03



CAMEL
CV04



CHOCOLATE
CV05



BLACK
CV06



BLUE GREY
CV07



TEAL
CV08



EMERALD
CV09



MUSTARD
CV10



TANGERINE TANGO
CV11



RED CASINO
CV12



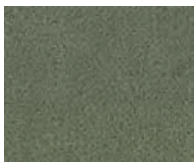
PURPLE
CV13



VIOLET
CV14



LILAC
CV15



LIGHT GREY
CV16



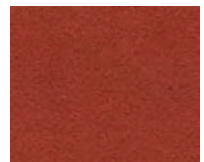
MIDNIGHT BLUE
CV17



BRUNSWICK GREEN
CV18



GREEN DUCK EGG
CV19



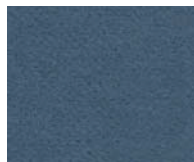
PEACH
CV20



FUCHSIA
CV21



MULBERRY
CV22



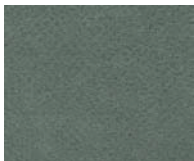
SKY
CV23



LIME
CV24



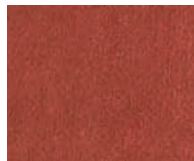
BASALT
CV25



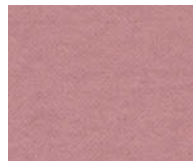
PALE GREEN
CV26



STEEL BLUE
CV27



ANTIQUE PINK
CV28



MILKSHAKE PINK
CV29



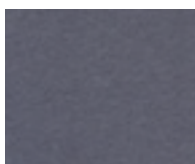
WARM GREY
CV30



ANTRACITE
CV31

COTTON VELVET *_ NEW COLOURS*

MARTINDALE 50.000 | COMPOSITION 100% COTTON



AMETHYST
CV32



CHALK
CV33



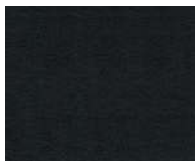
MARINE
CV34



CERULEAN
CV35



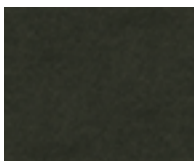
ROYAL BLUE
CV36



PINE
CV37



BUTTERMILK
CV38



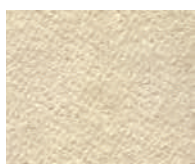
SAGE
CV39



SAFFRON
CV40

TREVIRA VELVET

MARTINDALE 50.000 | COMPOSITION 100% TREVIRA



MAGNOLIA
TRV01



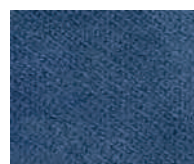
DESERT
TRV02



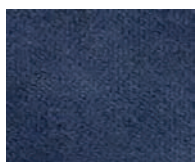
CHOCOLATE
TRV03



BLACK
TRV04



STEEL BLUE
TRV05



MIDNIGHT BLUE
TRV06



ROYAL BLUE
TRV07



TEAL
TRV08



SKY
TRV09



MOSS
TRV10



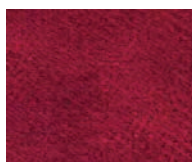
EMERALD
TRV11



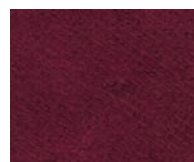
LIME
TRV12



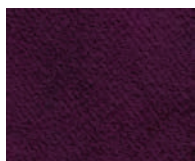
CAMEL
TRV13



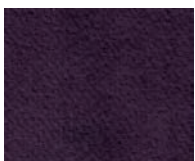
RED CASINO
TRV14



DARK RED
TRV15



MULBERRY
TRV16



PURPLE
TRV17



PALE PINK
TRV18



LIGHT GREY
TRV19



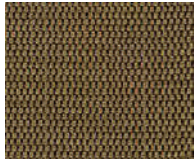
ANTRACITE
TRV20

WILD SILK

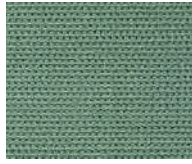
MARTINDALE 25.000 | COMPOSITION 90% VI + 10% SI



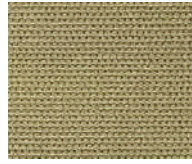
MAGNOLIA
WS01



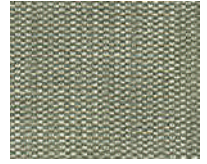
BRONZE
WS02



AQUAMARINE
WS04



HONEY
WS05



SILVER
WS07

TWILL FR

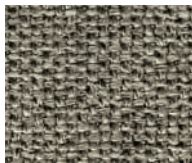
MARTINDALE 70.000 | COMPOSITION 53,7% AC + 46,3% PL



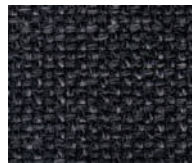
MAGNOLIA
TFR01



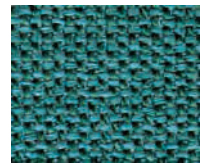
DESERT
TFR02



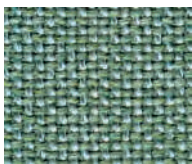
TAUPE
TFR03



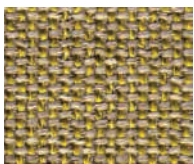
BLACK
TFR05



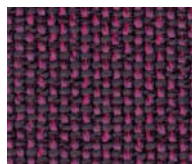
TEAL
TFR06



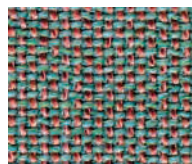
SKY
TFR07



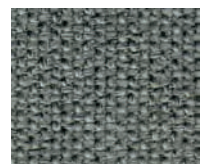
LIME
TFR09



RASPBERRY
TFR11



LILAC GREEN
TFR13



SILVER
TFR14

BOND CHENILLE _ *NEW*

MARTINDALE 100.000 | COMPOSITION 100% POLYESTER



WARM GREY
BC01



ANTRACITE
BC02



BLUE GREY
BC03



CHILI PEPPER
BC04



MUSTARD
BC05



EMERALD
BC06



VIVID CHENILLE _ *NEW*

MARTINDALE 60.000 | COMPOSITION 54% PL + 42% AC + 4%VI



PURE WHITE
VIC01



WARM GREY
VIC02



TAUPE
VIC03



LIGHT GREY
VIC04



ANTRACITE
VIC05



AMETHYST
VIC06



LAVENDER
VIC07



TANGERINE TANGO
VIC08



SAFFRON
VIC09



EMERALD
VIC10



CLOUD
VIC11



NAVY
VIC12



COTTON SATIN _ *NEW*

MARTINDALE 40.000 | COMPOSITION 54% PL + 32% CO



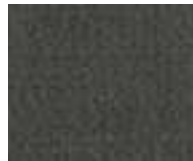
DESERT
CTS10



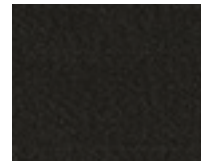
WARM GREY
CTS11



SILVER
CTS12



BASALT
CTS13



ANTRACITE
CTS14



LAVENDER
CTS15



AQUAMARINE
CTS16



MUSTARD
CTS17



EMERALD
CTS18



MILKSHAKE PINK
CTS19



LEATHER

MARTINDALE 50.000 | COMPOSITION 100% LEATHER



MILK
L01



STONE
L03



BLACK
L06



DARK RUBY
L08



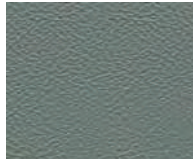
BURGUNDY
L09



ASPHALT
L10



HAZELNUT
L11



PALE GREEN
L15



LAVENDER
L16



LIGHT GREY
L17

CLASSIC LEATHER

MARTINDALE 50.000 | COMPOSITION 100% LEATHER



CREAM
CL02



SAND
CL03



DARK RUBY
CL05



BURGUNDY
CL06



BLACK
CL07

NUBUCK

MARTINDALE 100.000 | COMPOSITION 100% LEATHER



DESERT
NB01



TAUPE
NB02



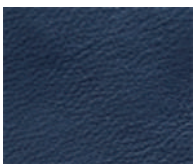
ANTRACITE
NB03



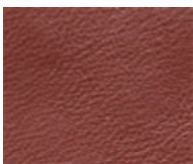
LIGHT GREY
NB04



SKY
NB05



STEEL BLUE
NB06



BURGUNDY
NB07

BOUCLÉ WOOL_ *NEW COLOURS*

MARTINDALE 40.000 | COMPOSITION 42% WO + 24% CO + 33% CV + 1% PA



SNOW
BW01



DESERT
BW03



LIGHT GREY
BW04



ANTRACITE
BW05

BOUCLÉ WOOL

MARTINDALE 26.000 | COMPOSITION 42% WO + 24% CO + 33% CV + 1% PA



SUGAR
BW02

BOUCLÉ WOOL_ *NEW*

MARTINDALE 40.000 | COMPOSITION 70% WO + 30% CO



BLACK
BW06

FANTASY FUR - SYNTHETIC FUR

COMPOSITION 100% MA



CREAM
FF01

FRINGES

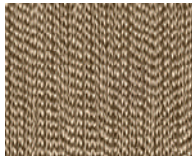
COMPOSITION VISCOSE RAYON - 97% WOOD CELLULOSE 3% PIGMENT



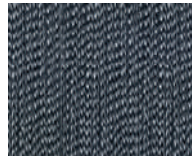
PURE WHITE 00
CTS 01



MAGNOLIA 02
CV01



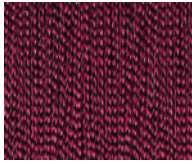
DESERT 04
CV02·CV03·CV30·
TRV01·TRV02



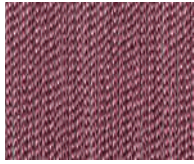
ANTRACITE 07
CV25·CV31·
TRV19·TRV20



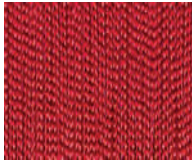
CHOCOLATE 10
CV05·TRV03·CTS05



DARK PINK 16
CV21



ANTIQUÉ PINK 18
CV28



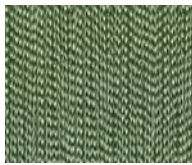
RED CASINO 22
CV12·TRV14



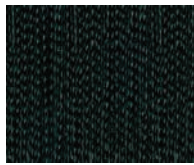
DARK RED 23
CV22·TRV15·TRV16



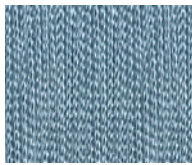
DARK BROWN 25
CV14



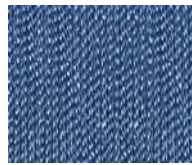
GREEN DUCK EGG 26
CV19·TRV10



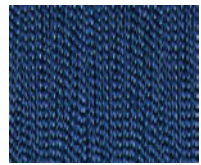
BRUNSWICK GREEN 29
CV18



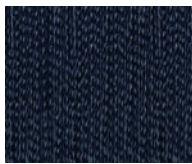
LIGHT BLUE 31
TRV09



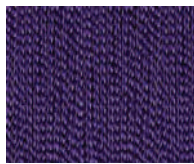
SKY 32
CV23



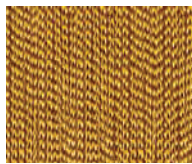
ROYAL BLUE 33
TRV07



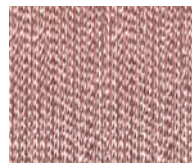
MIDNIGHT BLUE 34
CV07·CV13·CV17·
TRV06



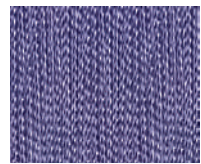
PURPLE 37
TRV17·CTS09



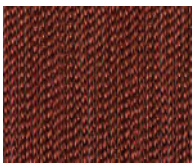
LIME 40
CV24



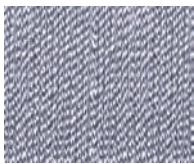
PALE PINK 41
CV29·TRV18



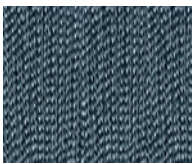
LILAC 45
CV15



PEACH 46
CV11·CV20



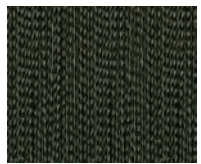
LIGHT GREY 48
CV16



PALE BLUE 49
CV26·CTS03



BLACK 50
CV06·TRV04·
CTS06·CTS07



EMERALD 102
CV09·TRV11



CAMEL 117
CV04·CV10·TRV13



HONEY 304
TRV12



TEAL 321
CV08·CV27·
TRV08 CTS08



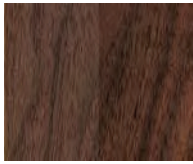
STEEL BLUE 322
TRV05

LEG FINISHINGS

WOOD VENEERS WITH MATT OR GLOSS VARNISH



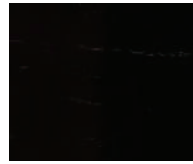
ROSEWOOD



WALNUT

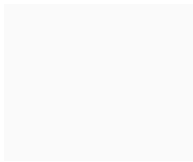


EBONY



WENGÉ STAIN

LACQUER FINISHING | AVAILABE IN ALL RAL RANGE COLOURS | MATT OR GLOSS FINISHING



WHITE

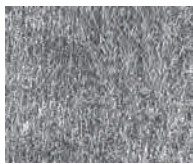


RED CASINO



BLACK

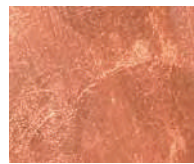
SPECIAL FINISHINGS - METALLIC LEAVES WITH MATT OR GLOSS VARNISH



SILVER LEAF



GOLD LEAF



COPPER LEAF

UPHOLSTERY NAILS



MATT NICKEL



PLATED NICKEL



PLATED BRASS



BRONZE RENAISSANCE



OLD GOLD SPECKLED

METAL PLATES



BRASS
POLISHED / BRUSHED



NICKEL
POLISHED / BRUSHED



COPPER
POLISHED / BRUSHED

